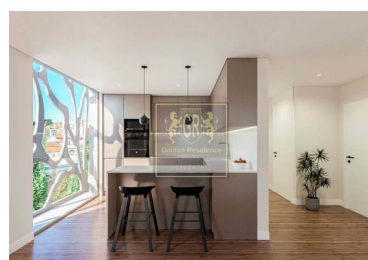
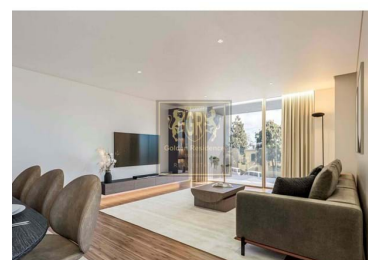








## Funchal (Santa Luzia) - Apartment



 **2**  
Bedrooms
  **2**  
Bathrooms
  **108,74**  
Area (m<sup>2</sup>)
  **1**  
Garage

**435 000 €**  
(EUR €)

### Apartment T2 in the center of Funchal

If you're looking for a new building with modern apartments, we have just the right option for you. This building is currently under construction and will feature a range of apartments with a modern design.

You'll have the choice between 1 bedroom, 2 bedroom, and 3 bedroom apartments, allowing you to select the perfect size and layout that fits your needs. Whether you're a single professional, a couple, or a family, there is an option available for you.

The apartments will feature contemporary finishes and fixtures, providing a stylish and comfortable living space. With open floor plans and plenty of natural light, you'll have a bright and airy atmosphere to call home.



**João Marrafa**

+351914770141 <sup>2</sup> · +351291764129 <sup>1</sup>

joaomarrafa@goldenresidence.pt

T +351 291 764 129 <sup>1</sup> · T +351 914 770 141 <sup>2</sup> · E [info@goldenresidence.pt](mailto:info@goldenresidence.pt)

Estrada Monumetal, 190F  
AMI 9413

<sup>1</sup> (Call to national fixed network) | <sup>2</sup> (Call to national mobile network)



Additionally, being a new construction, you'll have the advantage of modern amenities and features. These may include things like energy-efficient appliances, smart home technology, and communal facilities such as a gym or swimming pool.

This new building with modern apartments is a fantastic opportunity to secure a brand new, high-quality home. Contact us today to find out more about the available apartments and start planning for your future in this exciting development.

## Property Features

- Private condominium
- Walking distance to beach
- Energetic certification: A
- Lift
- Central location
- Garage



**João Marrafa**

+351914770141 <sup>2</sup> · +351291764129 <sup>1</sup>

joaomarrafa@goldenresidence.pt

**T +351 291 764 129 <sup>1</sup> · T +351 914 770 141 <sup>2</sup> · E [info@goldenresidence.pt](mailto:info@goldenresidence.pt)**

**Estrada Monumetal, 190F  
AMI 9413**

<sup>1</sup> (Call to national fixed network) | <sup>2</sup> (Call to national mobile network)