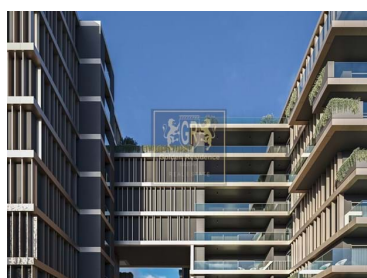
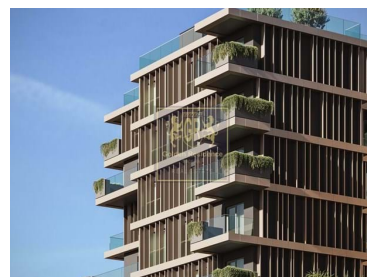








## São Martinho - Apartment



 **3**  
Bedrooms
  **3**  
Bathrooms
  **149**  
Area (m<sup>2</sup>)
  **153**  
Land Area (m<sup>2</sup>)
  **Garage**

**540 000 €**  
(EUR €)

## Apartment T3 in Estrada Monumental, Funchal

Recognized as 'Dubai' Madeira this brand new building currently in construction is located at the southwest of Estrada Monumental, close to all amenities. It is a project that brings together housing with spaces for leisure and other compatible uses, including tourism, through the creation of a commercial street in coexistence with the Estrada Monumental, that enhances the street and the development itself.

It is outspokenly one of the highlights of this development for being one of the most important 'faces' for those who circulate here.

With an innovative architecture, the building is covered with a 'skin' of bronze colored metal sheets with distinct distribution rhythms along each floor, punctuated with glazed balconies and forefronts in contrast with a dark background. The luxury development has a gym and 61 units, of which 5 are



**João Marrafa**

+351914770141 <sup>2</sup> · +351291764129 <sup>1</sup>

joaomarrafa@goldenresidence.pt

**T +351 291 764 129 <sup>1</sup> · T +351 914 770 141 <sup>2</sup> · E info@goldenresidence.pt**

**Estrada Monumetal, 190F  
AMI 9413**

<sup>1</sup> (Call to national fixed network) | <sup>2</sup> (Call to national mobile network)



commercial spaces and 56 are apartments with generous areas ranging from one to four bedrooms.

T2 from 430.000 euros

T3 from 540.000 euros

## Property Features

- Garden
- Walking distance to beach
- Energetic certification: In process
- Lift
- Central location
- Garage



**João Marrafa**

+351914770141 <sup>2</sup> · +351291764129 <sup>1</sup>

joaomarrafa@goldenresidence.pt

**T +351 291 764 129 <sup>1</sup> · T +351 914 770 141 <sup>2</sup> · E info@goldenresidence.pt**

**Estrada Monumetal, 190F  
AMI 9413**

<sup>1</sup> (Call to national fixed network) | <sup>2</sup> (Call to national mobile network)