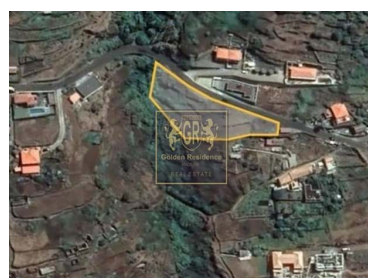
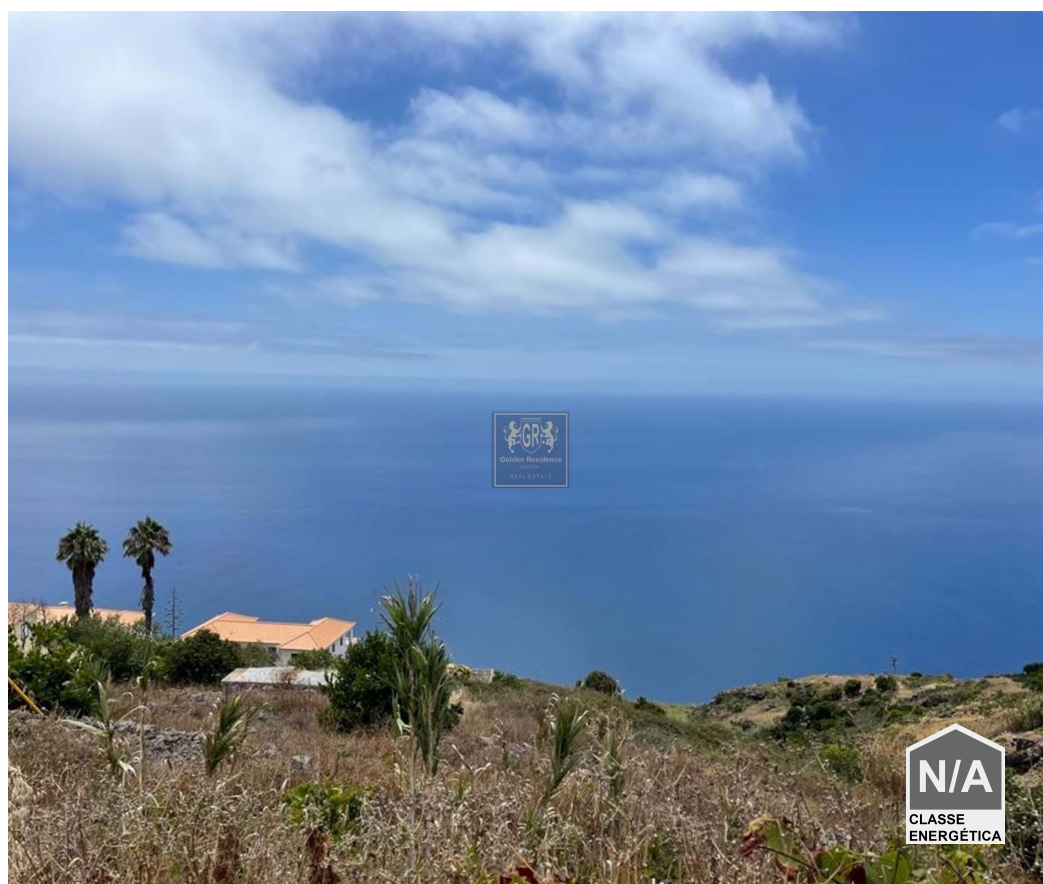




Fajã da Ovelha - Land



1850

Land Area (m²)

225 000 €

(EUR €)

Land in Fajã da Ovelha

Excellent land located in Fajã da Ovelha, offering an amazing view of the sea and excellent sun exposure throughout the day, in a very calm area in Fajã da Ovelha.

Property Features

- Energetic certification: Exempt



João Marrafa

+351914770141 ² · +351291764129 ¹

joaomarrafa@goldenresidence.pt

T +351 291 764 129 ¹ · T +351 914 770 141 ² · E info@goldenresidence.pt

Estrada Monumetal, 190F
AMI 9413

¹ (Call to national fixed network) | ² (Call to national mobile network)